



CUSTOMER STORY

SAXENHOJ PSYCHIATRY

Saxenhøj Psychiatry

The care home Saxenhøj is a psychiatric institution situated on the island of Lolland. The institution covers a larger area with several buildings with several floors. Currently, there are about 300 citizens associated with social or psychiatric problems of which 100 stay at Saxenhøj. Saxenhøj's oldest buildings are about 150 years old, and the institution has expanded several times over the years. The staff protection system was a combination of various older panic alarm systems in different buildings, a new fire alarm system from Siemens, and an older radio communication system.

Saxenhøj therefore wanted to phase out the old systems and to install a new central staff security system which would cover the whole area. The new system had to reduce the complexity and the knowledge required to respond to emergencies. All employees of the institution should have a personal panic button which in situation of panic, should inform about the employees' positions both inside and outside the buildings.

Some of the residents' rooms required positioning at room level while others simply needed positioning at building level. In addition to panic warning and positioning, the new system had to be able to handle patient calls from the homes of disabled citizens, too, and at the same time be able to send fire alarms to staff.



ZONITH APP & BLUETOOTH ID BADGE WITH PANIC BUTTON

The personal security system

Saxenhøj chose to implement ZONITH's wireless panic alarm system.

One part of the solution uses ZONITH's ID card holder and Smartphone app. The ID card holder has a discreet panic alarm button on the back, and can be positioned wirelessly indoors via Bluetooth. When an alarm is raised, colleagues will be notified on their Smartphones or radios. The other part of the solution uses radios with panic alarm buttons.

The system can provide GPS-positioning and indoors positioning via Bluetooth.



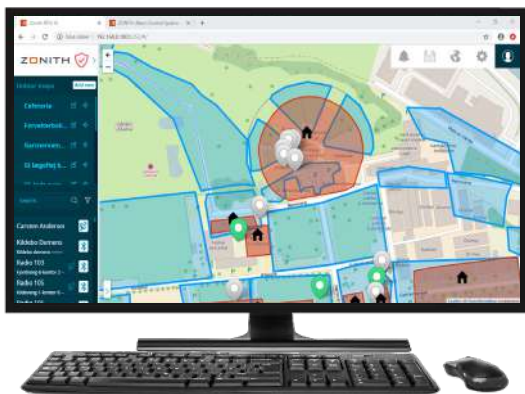
Indoor Positioning System

To ensure that the staff involved in an emergency call can get immediate assistance, wireless Bluetooth positioning has been installed in all buildings at Saxenhøj. The positioning is handled by 130 Bluetooth receivers installed in the ceilings of the buildings.

If a threatening situation arises, the staff simply presses their panic buttons and the system automatically sends the alarm to their colleagues. The colleagues thereby receive exact information about where their colleague in distress can be found.

GPS outdoor positioning

There are many large outdoor areas at Saxenhøj. When an employee carrying a panic-button-radio leaves one of the buildings, the positioning automatically changes from indoor Bluetooth positioning to GPS positioning. Parking lots and other outdoor areas have been named specific logical names. When an alarm is raised from an outdoor area, colleagues will therefore receive a message telling where their colleague in distress is located. E.G.: "An alarm from Karen, parking lot Gartnervænget".



Handling of other alarm types

In addition to panic alarms, Zonith's software platform also handles patient calls and fire alarms. At an institution like Saxenhøj it is important to be able to respond quickly to fire alarms to avoid unnecessary evacuations.

Key Benefits

- Increases coverage to include every meter of the facility from hospital rooms to car park.
- Enables a variety of alarms from various vendors to be managed and distributed on one platform.
- Enables all alarms to be logged for post incident reporting.
- Offers a cost-effective option for an all-in-one solution.
- Increases staff safety throughout entire hospital.
- Allows alarm handling and both indoor/outdoor positioning from one wireless device.

"It was key to our staff to get a new, reliable panic alerting system with large coverage and positioning capabilities. By selecting the system from ZONITH's we have a solution that can do it all"

Carsten Andersen, Chief Technician